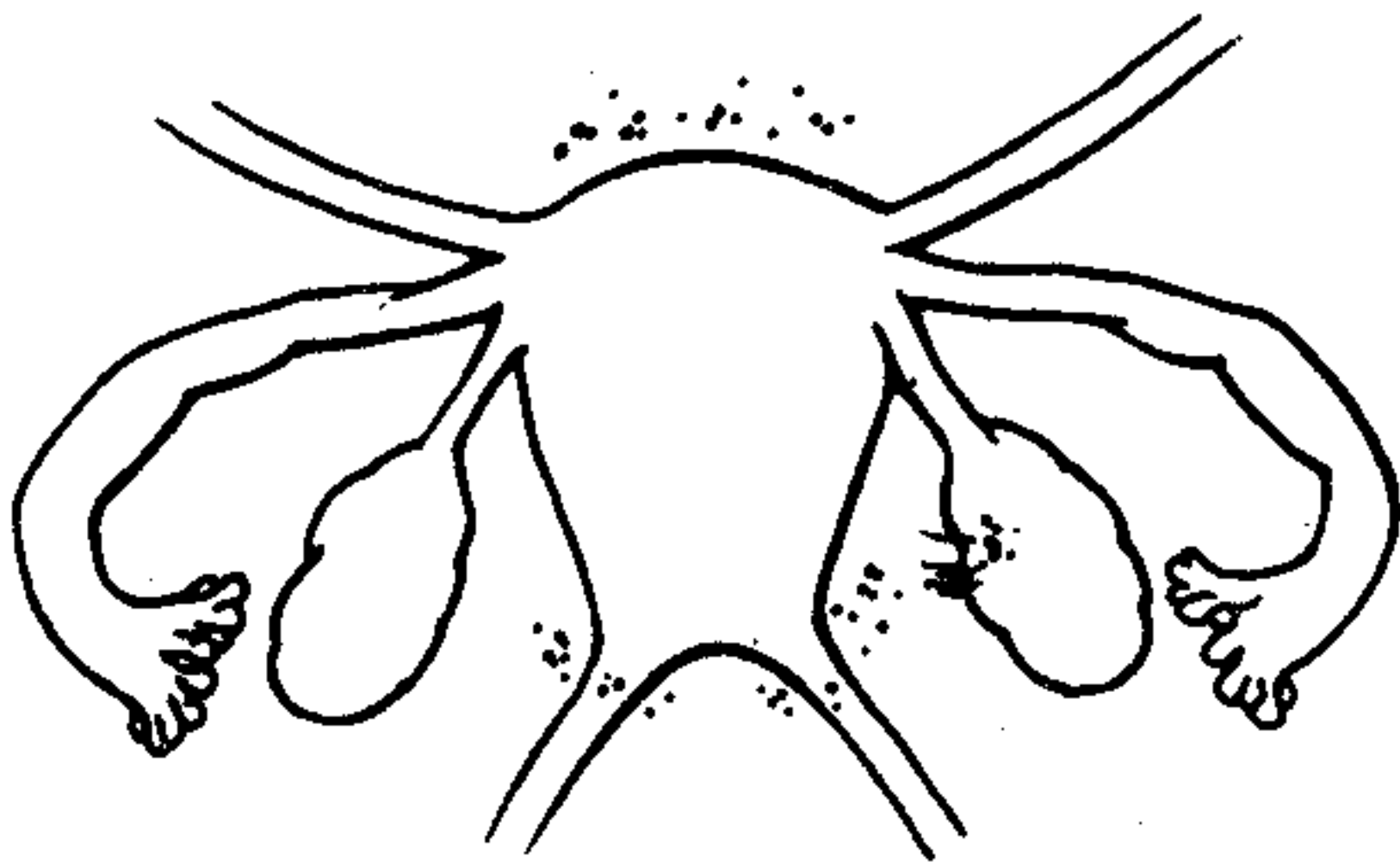


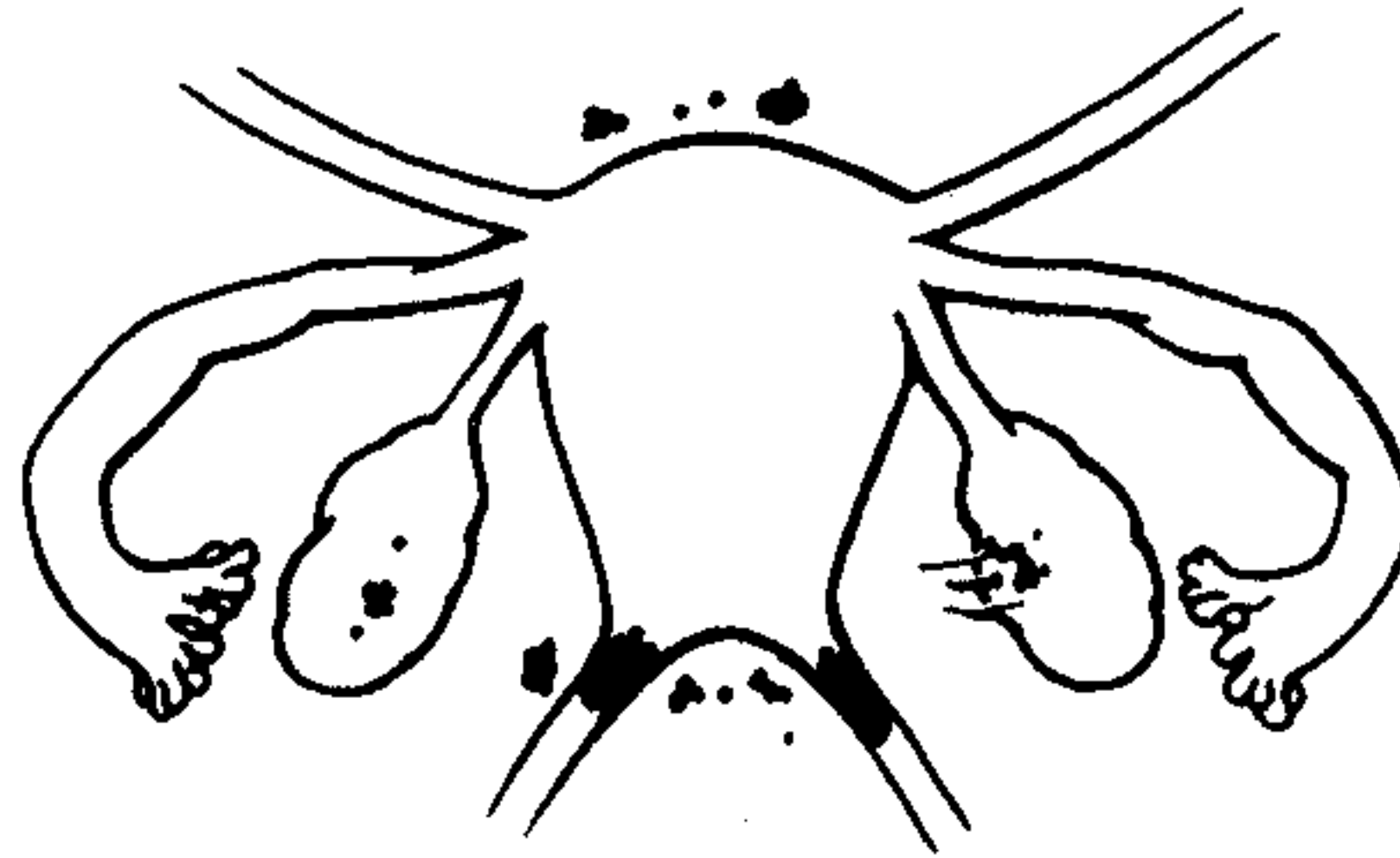
## EXAMPLES & GUIDELINES

### STAGE I (MINIMAL)



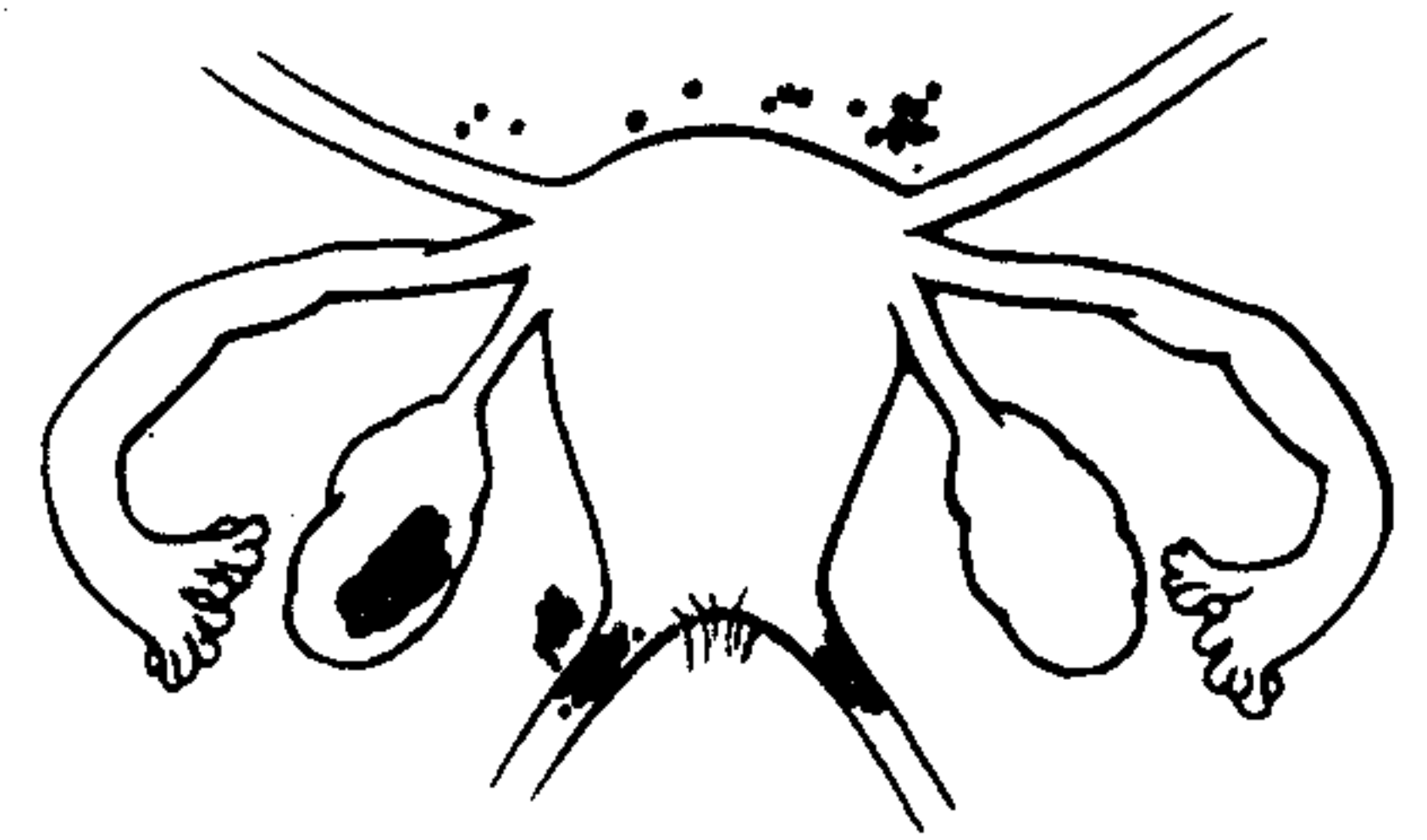
PERITONEUM			
Superficial Endo	-	1-3cm	- 2
R. OVARY			
Superficial Endo	-	< 1cm	- 1
Filmy Adhesions	-	< 1/3	- 1
TOTAL POINTS			4

### STAGE II (MILD)



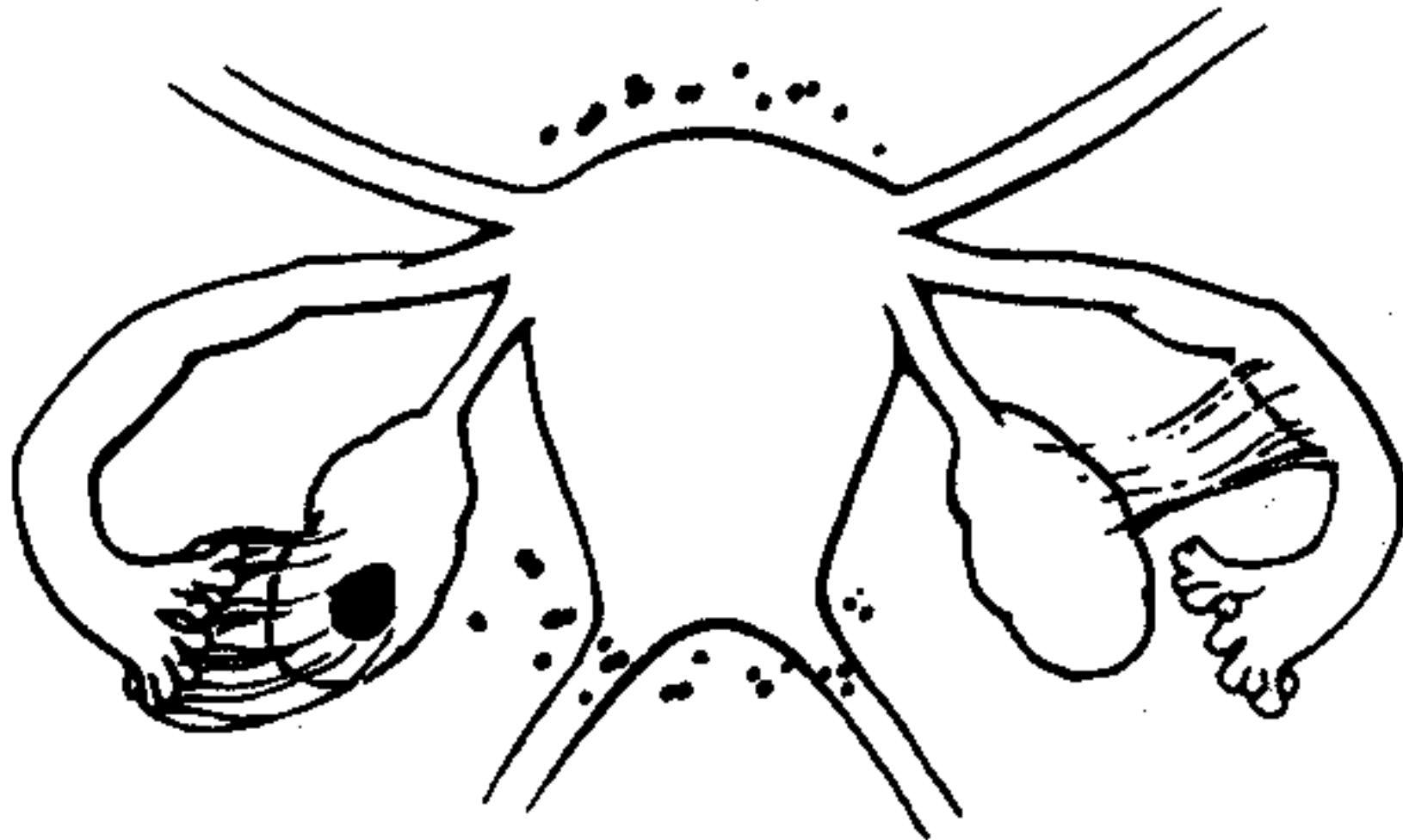
PERITONEUM			
Deep Endo	-	> 3cm	- 6
R. OVARY			
Superficial Endo	-	< 1cm	- 1
Filmy Adhesions	-	< 1/3	- 1
L. OVARY			
Superficial Endo	-	< 1cm	- 1
TOTAL POINTS			9

### STAGE III (MODERATE)



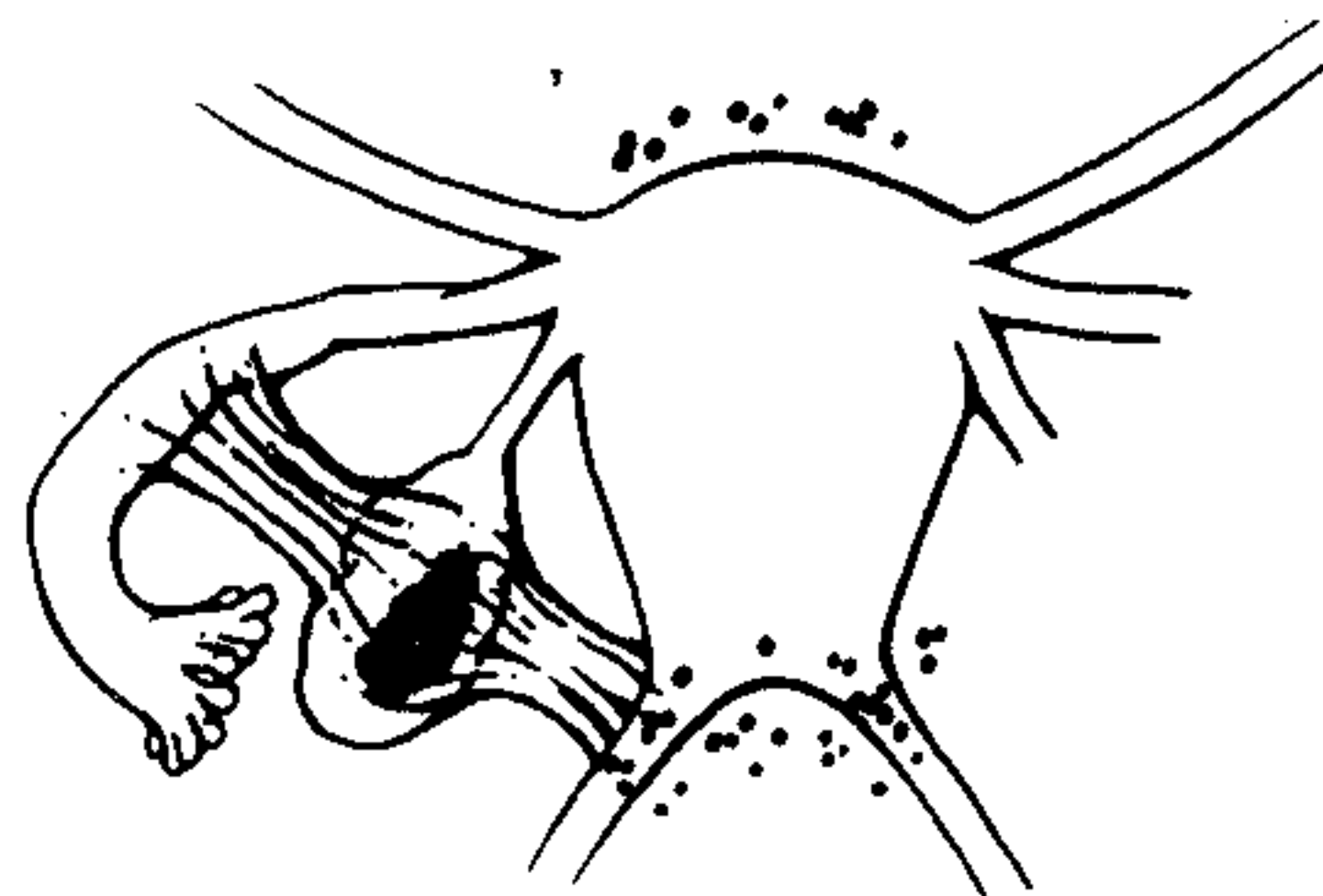
PERITONEUM			
Deep Endo	-	> 3cm	- 6
CULDESAC			
Partial Obliteration			- 4
L. OVARY			
Deep Endo	-	1-3cm	- 16
TOTAL POINTS			26

### STAGE III (MODERATE)



PERITONEUM			
Superficial Endo	-	> 3cm	- 4
R. TUBE			
Filmy Adhesions	-	< 1/3	- 1
R. OVARY			
Filmy Adhesions	-	< 1/3	- 1
L. TUBE			
Dense Adhesions	-	< 1/3	- 16*
L. OVARY			
Deep Endo	-	< 1 cm	- 4
Dense Adhesions	-	< 1/3	- 4
TOTAL POINTS			30

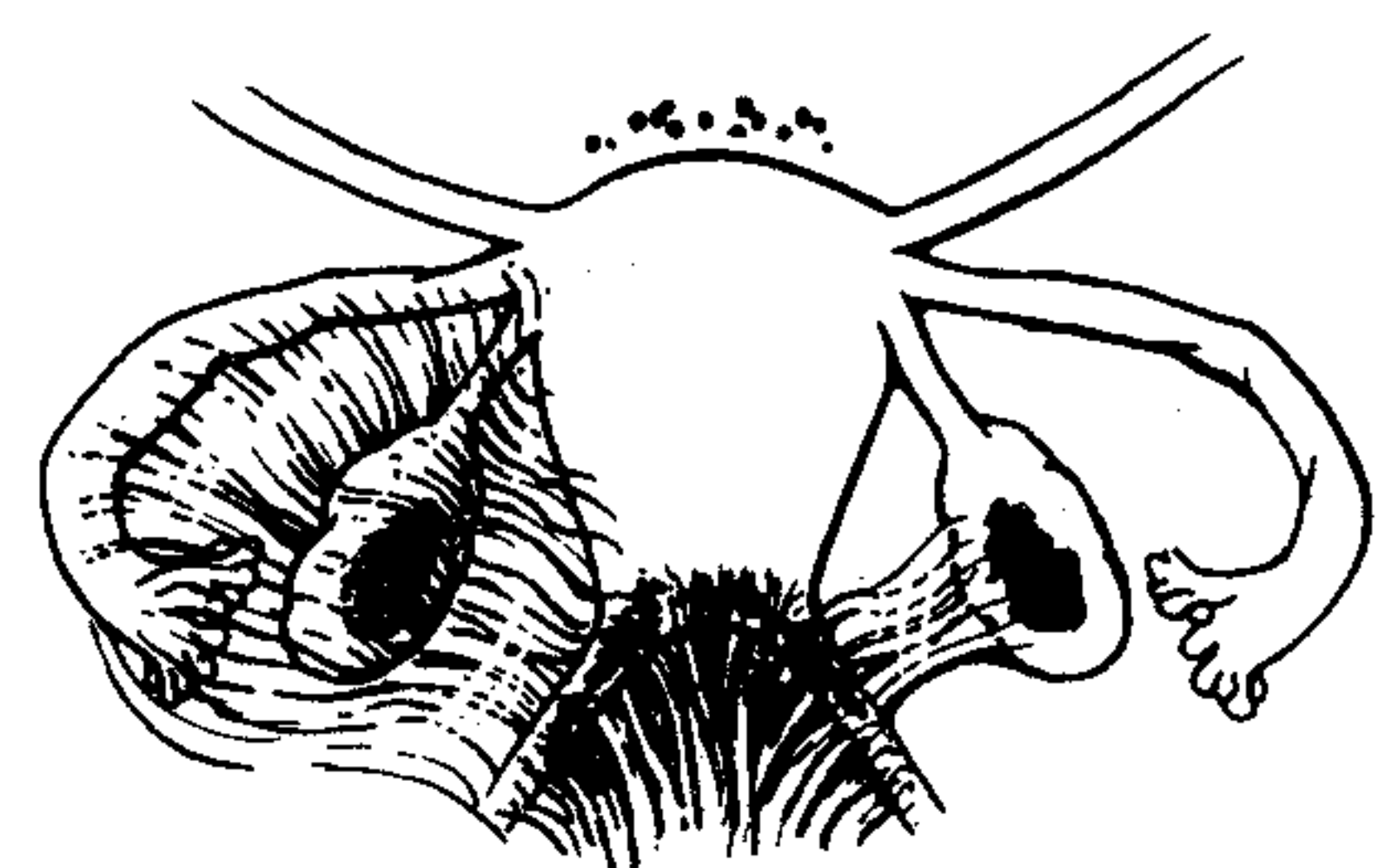
### STAGE IV (SEVERE)



PERITONEUM			
Superficial Endo	-	> 3cm	- 4
L. OVARY			
Deep Endo	-	1-3cm	- 32**
Dense Adhesions	-	< 1/3	- 8**
L. TUBE			
Dense Adhesions	-	< 1/3	- 8**
TOTAL POINTS			52

\*Point assignment changed to 16  
\*\*Point assignment doubled

### STAGE IV (SEVERE)



PERITONEUM			
Deep Endo	-	> 3cm	- 6
CULDESAC			
Complete Obliteration			- 40
R. OVARY			
Deep Endo	-	1-3cm	- 16
Dense Adhesions	-	< 1/3	- 4
L. TUBE			
Dense Adhesions	-	> 2/3	- 16
L. OVARY			
Deep Endo	-	1-3cm	- 16
Dense Adhesions	-	> 2/3	- 16
TOTAL POINTS			114

Determination of the stage or degree of endometrial involvement is based on a weighted point system. Distribution of points has been arbitrarily determined and may require further revision or refinement as knowledge of the disease increases.

To ensure complete evaluation, inspection of the pelvis in a clockwise or counterclockwise fashion is encouraged. Number, size and location of endometrial implants, plaques, endometriomas and/or adhesions are noted. For example, five separate 0.5cm superficial implants on the peritoneum (2.5 cm total) would be assigned 2 points. (The surface of the uterus should be considered peritoneum.) The severity of the endometriosis or adhesions should be assigned the highest score only for peritoneum, ovary, tube or culdesac. For example, a 4cm superficial and a 2cm deep implant of the peritoneum should be given a score of 6 (not 8). A 4cm

deep endometrioma of the ovary associated with more than 3cm of superficial disease should be scored 20 (not 24).

In those patients with only one adnexa, points applied to disease of the remaining tube and ovary should be multiplied by two. \*\*Points assigned may be circled and totaled. Aggregation of points indicates stage of disease (minimal, mild, moderate, or severe).

The presence of endometriosis of the bowel, urinary tract, fallopian tube, vagina, cervix, skin etc., should be documented under "additional endometriosis." Other pathology such as tubal occlusion, leiomyomata, uterine anomaly, etc., should be documented under "associated pathology." All pathology should be depicted as specifically as possible on the sketch of pelvic organs, and means of observation (laparoscopy or laparotomy) should be noted.